

AS INSTRUMENTS OF SERVICE, ALL DRAWINGS, SPECIFICATIONS, AND COPIES THEREOF FURNISHED BY THE ARCHITECT ARE TO BE USED ONLY FOR THIS PROJECT AND NOT TO BE USED ON ANY OTHER PROJECTS. THESE DOCUMENTS ARE NOT VALID UNLESS SIGNED AND SEALED BY THE ARCHITECT OR ENGINEER. CHANGES TO THE DRAWINGS MAY ONLY BE MADE BY THE ARCHITECT OR ENGINEER. BY USE OF THE DRAWING FOR CONSTRUCTION OF THE PROJECT, THE OWNER REPRESENTS THAT THEY HAVE REVIEWED AND APPROVED THE DRAWINGS, AND THAT THE CONSTRUCTION DOCUMENT PHASE OF THE PROJECT IS COMPLETE. THE CONTRACTOR REPRESENTS THAT HE HAS VISITED THE SITE, FAMILIARIZED HIMSELF WITH THE LOCAL CONDITIONS, VERIFIED FIELD DIMENSIONS, AND CORRELATED HIS OBSERVATIONS WITH THE REQUIREMENTS OF THE CONTRACT DOCUMENTS. NOTIFY ARCHITECT PRIOR TO START OF THE WORK OF DISCREPANCIES FOUND AND REQUEST CLARIFICATION. DO NOT SCALE THE DRAWING. MINIMUM FEE OF \$100 FOR UNAUTHORIZED AS-BUILT FIELD CHANGES.

2301 W. SAMPLE RD., STE. 5-7C
POMPANO BEACH, FL 33073
Phone (954) 928-0635
E-MAIL: berrie@berriedesign.com
FL LIC. #A4002741

BERRIE
Architecture
& Design, Inc.

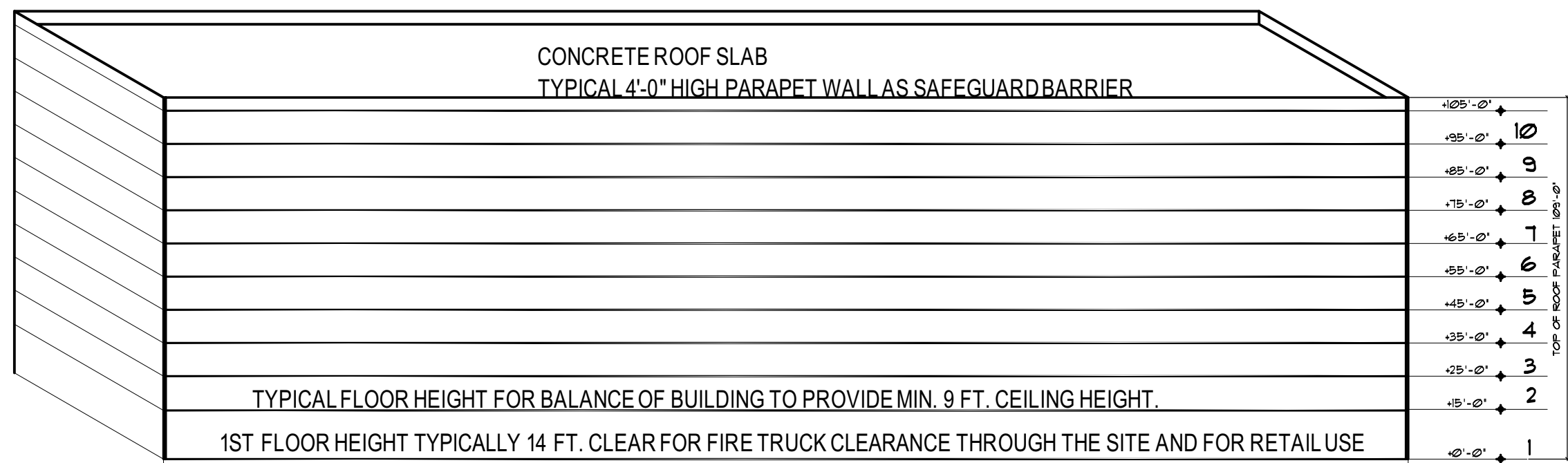
Project Name
ATLANTIC 3350
3350 E ATLANTIC BLVD
POMPANO BEACH, FLORIDA, 33062
Sheet Title
PRELIMINARY SITE PLAN DESIGN
MAX BUILDABLE CALCS. / TRASH AREA
PARTIAL RESIDENTIAL TOWER ENTRY ELEV.

Prog./Rev.
SITE PLAN EXT.
of DEV. ORDER
No. 12-12000003
DATED 10/24/12
PAM COMMENTS
4/17/20
10/08/20
SOLID WASTE

Digitally
signed by
Richard
Berrie VP
Date:
2020.10.13
08:47:24
Richard A. Berrie

Scale
1"=20'-0"
No.
By RB
Date 01/17/20

PZ20-12000005
2/24/2021



SITE AREA = 90,795 SQ. FT. @ 72% LOT COVERAGE = 65,372.4 SQ. FT. X 105 FT. = 6,864,102 CU FT OF CONSTRUCTION
GRADE LEVEL TO PROMENADE DECK = 62,016 SQ. FT. X 44'-4" = 2,749,376 CU. FT.
PROMENADE DECK = 363,344 CU FT.
BANQUET HALL = 5,878 SQ. FT. X 18'-0" = 109,723 CU FT
HOTEL PLATE = 12,214 SQ. FT. X 9'-8" = 118,069 CU FT
RETAIL STRUCTURES = 12,883 SQ. FT. X 9'-8" = 124,832 CU FT.
HOTEL TOWER PLATE = 11,544 SQ. FT. X 156 FT. = 1,800,864 CU FT.
RESIDENTIAL TOWER 5 UNIT PLATE = 11,909 SQ. FT. X 126 FT. = 1,500,534 CU FT.
RESIDENTIAL TOWER 4 UNIT PLATE = 11,544 SQ. FT. X 30 FT. = 346,320 CU FT.
TOTAL SQUARE FEET OF PROPOSED PROJECT W/ SLENDER TOWERS = 6,760,438 CU FT.
(INCLUDES DRIVE AILES BELOW STRUCTURES. OPEN HOTEL & RESIDENTIAL BALCONIES NOT INCLUDED)

ATLANTIC BOULEVARD (FIELD)
PUBLIC ROAD (PLAT)
(NEW WIDTH VARIOUS)

AREA OF SECOND LEVEL PLATE = 62,016 SQ. FT.

AREA OF SITE = 90,795 SQ. FT.
62,016 / 90,795 = 68.3% LOT COVERAGE

W/ FUTURE COVERED OUTDOOR DINING AREA ZONE = 65,372 SQ. FT.
65,372 / 90,795 = 72 % LOT COVERAGE

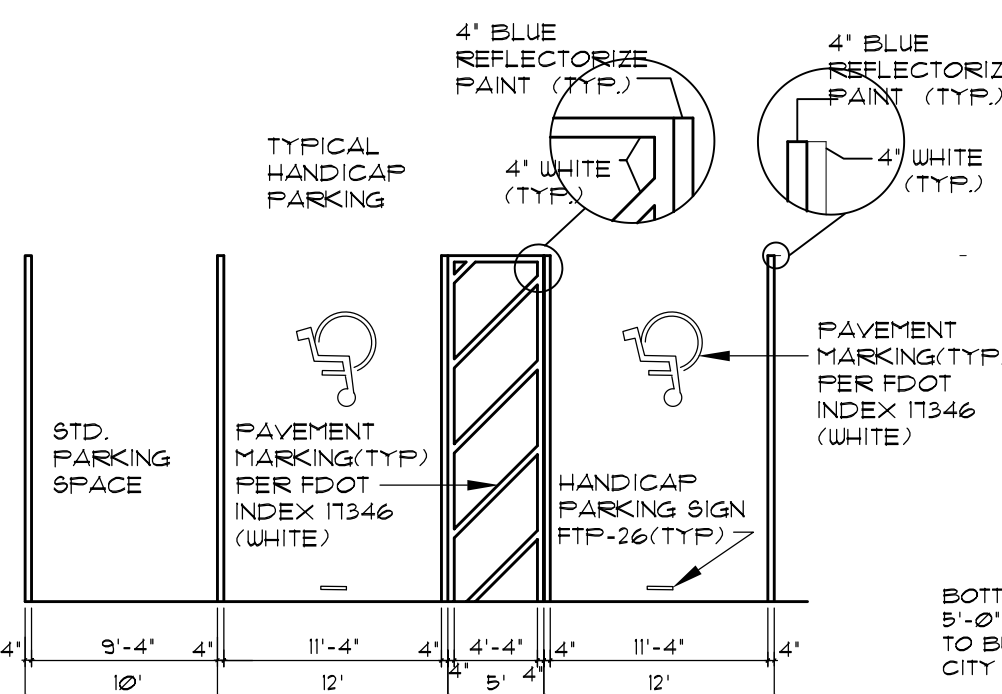
PLAN

SE 1st STREET (FIELD)
FIRST STREET (PLAT)
(50' TOTAL RW)
(FUTURE 60' RW)

STATE ROAD 4-1-A (FIELD)
LOCAL ROAD
(FUTURE 60' RW)

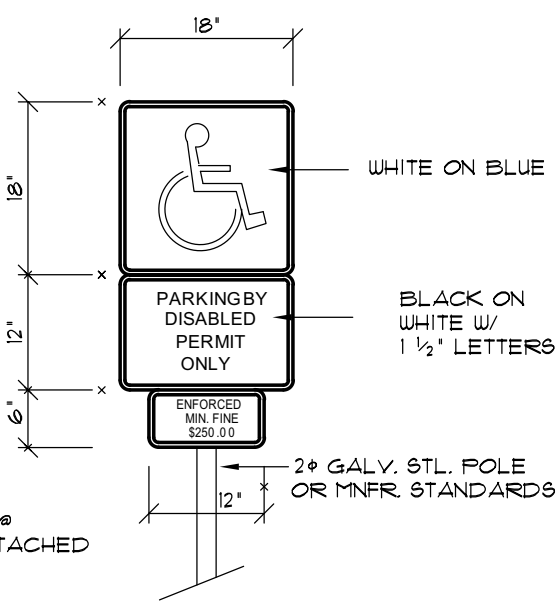


72% MAX SITE COVERAGE / MAX B-3 BUILDABLE AREA MODEL
SCALE: 1/8" = 1'-0"



ADA STRIPING

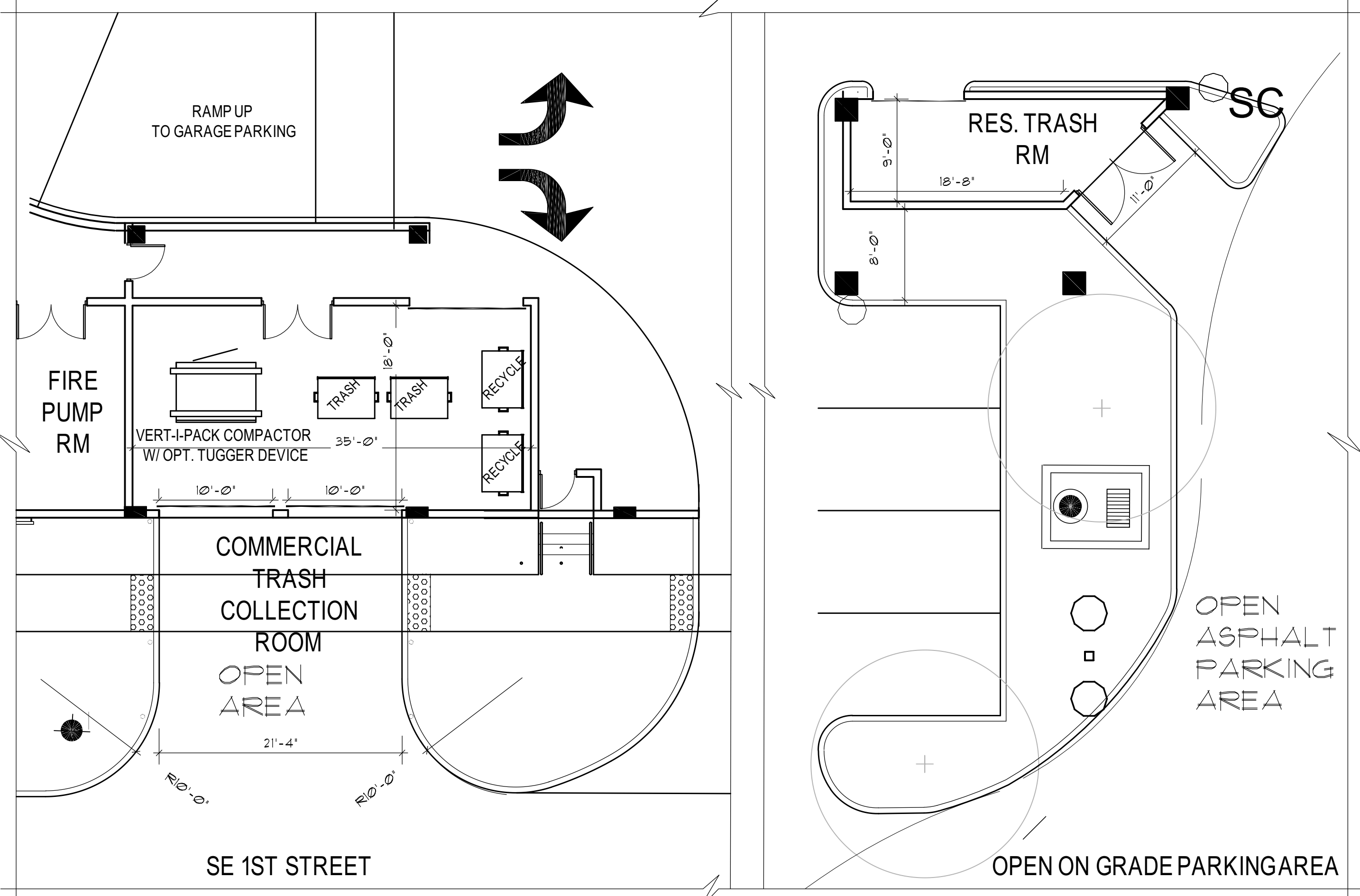
SCALE: 1"=10'-0"



ADA PARKING SIGN

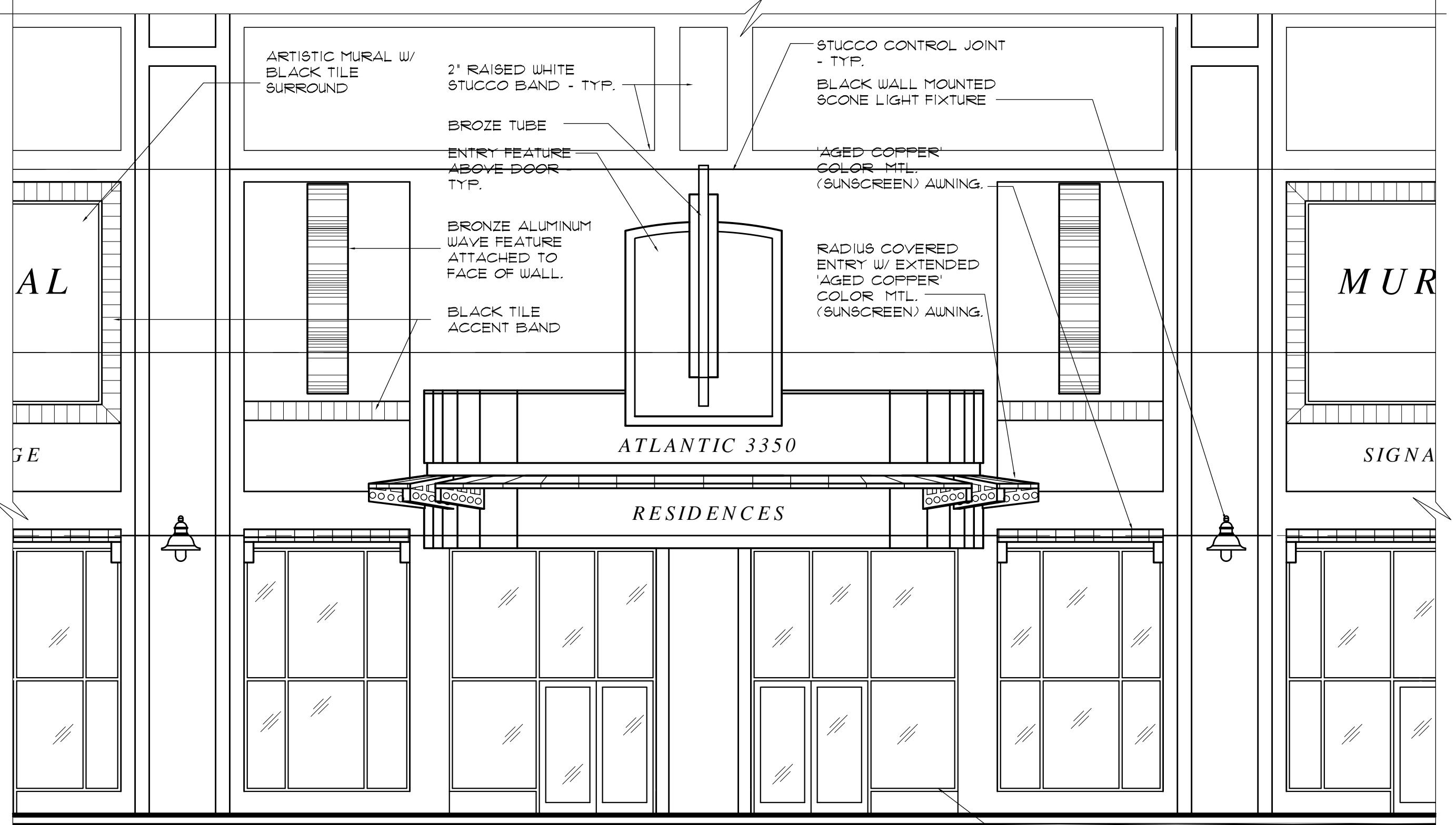
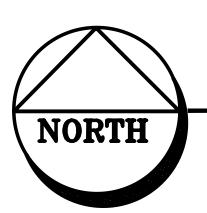
SCALE: 1"=10'-0"

NOTES:
1. HANDICAPPED SIGN WILL BE OF F.D.O.T. (BLUE) COLOR.
2. PAVEMENT BORDER LINES (ONE ON EACH SIDE) OF THE HANDICAP SPACE WILL BE OF A BLUE COLOR OF A QUALITY EQUIVALENT TO SUPER STRIPE TRAFFIC PAINT SOLD BY FOX VALLEY SYSTEMS, INC. OF CARY, ILLINOIS, PHONE 1-800-523-4770. SHALL BE STRIPED ON THE WEARING SURFACE OF EACH SPACE DESIGNED FOR THE HANDICAP PARKING SPACE. ORDINANCE NO. 1950
3. ALL LETTERS IN MIDDLE PORTION OF SIGN ARE 1 1/2" SERIES AT 15" SPACING.
4. ALL LETTERS IN BOTTOM PORTION OF SIGN ARE 1" SERIES AT 15" SPACING.
5. MINIMUM FINE SHALL BE \$250.00 PER ORDINANCE 2143.
THE TOP PORTION OF FTP-36 SHALL HAVE A REFLECTIVE BLUE BACKGROUND WITH WHITE REFLECTIVE SYMBOLS AND BORDER.



PARTIAL SITE - GRADE LEVEL PLAN

TRASH AND RECYCLE AREA SCALE: 1/8" = 1'-0"



RESIDENCE TOWER ENTRANCE ELEV.

SCALE: 3/16" = 1'-0"

DURANAR WHITE ALUMINUM
STOREFRONT SYSTEM ON KNEEWALL
W/ FPG 'SOLEXIA' LIGHT GREEN
TINTED GLASS - TYP.